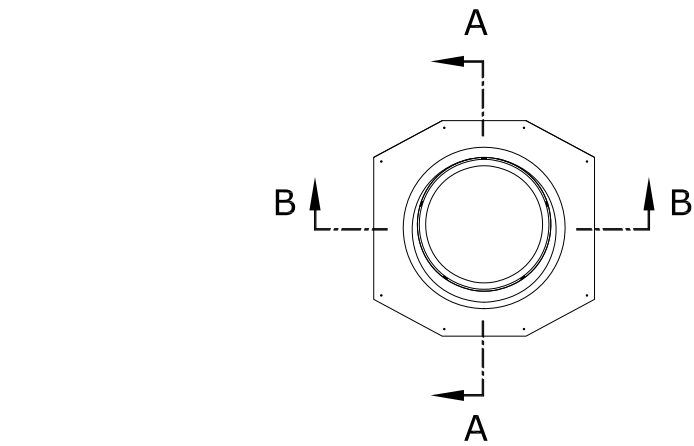
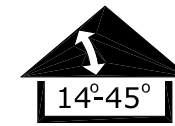
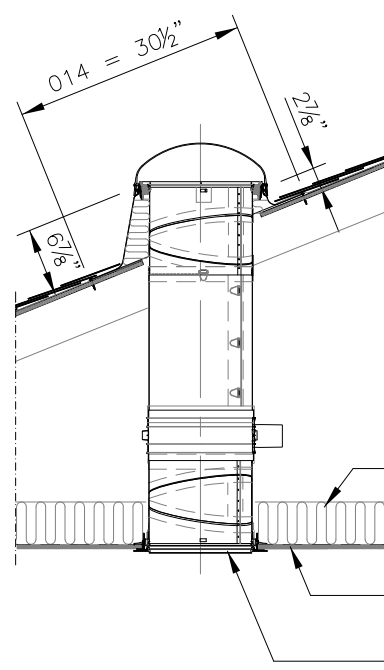


# General Notes

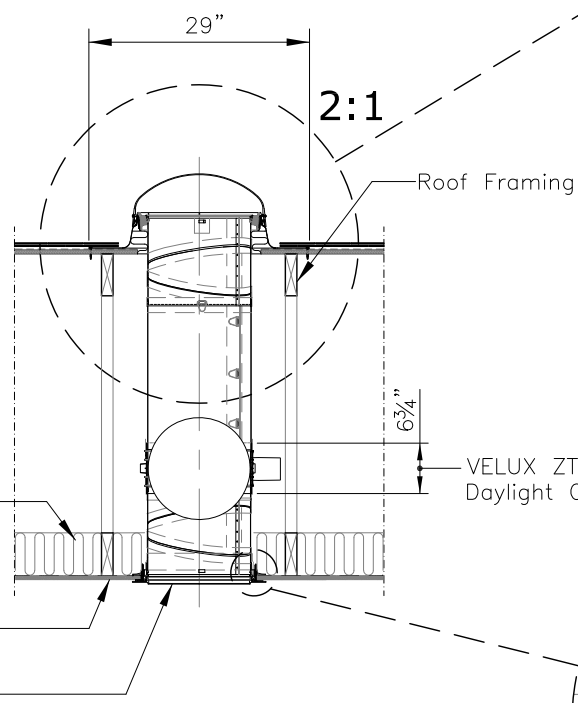
1. This drawing emphasizes the TMC pitched flashing VELUX SUN TUNNEL Skylight. It illustrates a general arrangement layout (plus recommendations) for a VELUX TMC installation in a 14–45 degree roof pitch application utilizing either a suspended acoustical tile or grid ceiling installation.
2. The architectural/structural design and specifications for the inclusion of a tubular daylighting device, such as the VELUX TMC, in any roofing/ceiling application is determined and provided by others. The design criteria includes, but is not limited to design loads, structural configurations, structural framing member sizes and material, architectural finishes and integration with the roofing/ceiling systems of the building. VELUX assumes no responsibility or liability in the design, construction and performance of a building structure by others.
3. Dimensions shown are nominal, unless indicated otherwise.
4. Product specific dimensions are referenced in the TMC Product Data Sheet documentation.



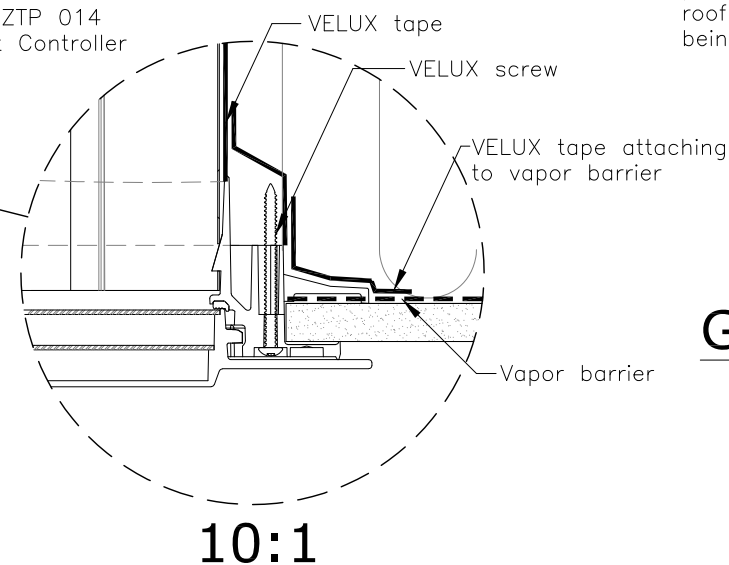
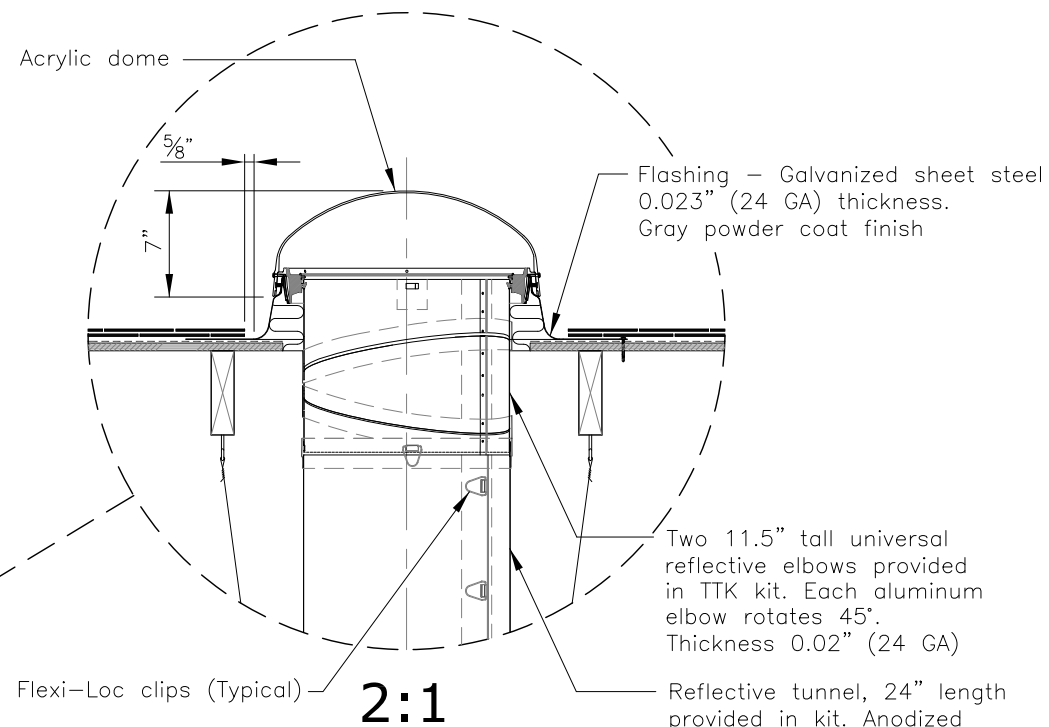
Plan



Section A-A



Section B-B



## General Arrangement Layout

TMC 014 Components	Quantity
<b>TMC 014 0000</b> <ul style="list-style-type: none"> <li>Acrylic Dome</li> <li>Counter flashing assembly</li> <li>Hardware bag</li> <li>Option                             <ul style="list-style-type: none"> <li>TMC 014 1000 – Impact Polycarbonate dome</li> </ul> </li> </ul>	—
<b>TTK 014</b> <ul style="list-style-type: none"> <li>24"/.61m Rigid tunnel</li> <li>(2) 12"/.30m Rigid elbows</li> <li>Tape for tunnel joints</li> <li>Hardware bag</li> </ul>	—
<b>THC 014 0002</b> <ul style="list-style-type: none"> <li>Ceiling ring assembly with prismatic diffuser</li> <li>Tape for tunnel joints</li> <li>Gasket material for diffuser</li> <li>Hardware bag</li> <li>Options                             <ul style="list-style-type: none"> <li>THC 014 0000 – Frosted diffuser</li> <li>THC 014 0003 – Fresnel diffuser</li> </ul> </li> </ul>	—
<b>ZTP 014</b> <ul style="list-style-type: none"> <li>Daylight Controller KES 160 Control System also required for control &amp; power to ZTP 014</li> </ul>	—
<b>Option: ZTC 014 0041US Energy kit</b> <ul style="list-style-type: none"> <li>Residential energy kit (Diffuser–middle &amp; 2–Pivot ring lens)</li> </ul>	—
<b>Option: ZTR 014</b> <ul style="list-style-type: none"> <li>ZTR 014 0002 24"/.61m Rigid tunnel</li> <li>ZTR 014 0004 48"/1.22m Rigid tunnel</li> <li>ZTR 014 0006 72"/1.83m Rigid tunnel</li> <li>ZTR 014 0012 144"/3.66m Rigid tunnel</li> <li>ZTR 014 0024 288"/7.32m Rigid tunnel</li> </ul>	—

This drawing is an instrument of service and is provided for informational use only.

	VELUX 1418 Evans Pond Road Greenwood, SC 29649 1-800-88-VELUX www.VELUXUSA.com		Name	Date
	Sky-Product Management		Drawn by JDH Checked by JL,CJ Drawing No.	Dec 2018 Dec 2018
Commercial SUN TUNNEL Skylight TMC 014 w/ TTK 014, THC 014, ZTP 014, ZTC 014 (TMC 014 0002TH/TMC 014 1002TH)			TMC 014-01-0718	