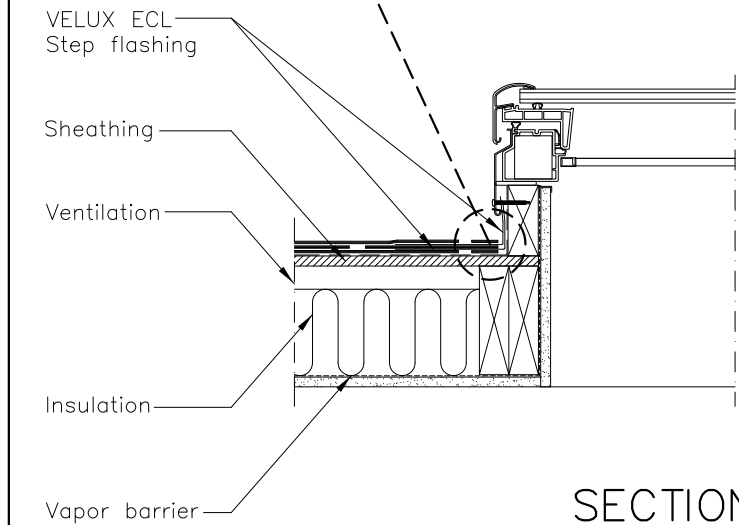
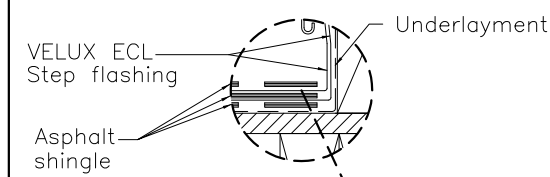


ELEVATION

Finish raw edge of finish material to provide a moisture barrier utilizing sealing tape and/or adhesive sealant



SECTION B-B

This drawing is an instrument of service and is provided for informational use only.

BASIS OF DESIGN:
VELUX VCS solar venting curb mounted skylight

VELUX Solar Panel and Rain Sensor

VELUX ECL Sill Flashing

Underlayment
Note 1 & 3

Asphalt shingle

Finish material

5 3/16"
132 mm

1 1/8"
Top of curb

60-100 mm
2 3/8"-4"

SECTION A-A

Vapor barrier

Fasten to curb with screws furnished with skylight

Underlayment

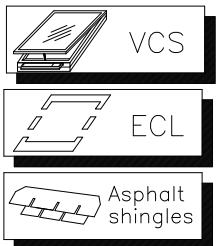
VELUX ECL Saddle Flashing

Sheathing

Insulation – place carefully around window

VELUX ECL Head Flashing placed between underlayment

Headers or blocking as required per code(s)



GENERAL NOTES

1. Underlayment to be folded up against all sides of curb.
2. Vapor barrier should be used to avoid moisture.
3. Wrap curb in underlayment. VELUX recommends use of VELUX type ZOZ 216 adhesive underlayment.

	VELUX 1418 Evans Pond Road Greenwood, SC 29649 1-800-88-VELUX www.VELUXUSA.com		Name JDH	Date July 2013
	Sky-Product Management		Checked by WQ	July 2013
VCS-Residential/Commercial Roof Section (Cathedral Ceiling with Asphalt Shingles)			Drawing No. VCS-03-0613	