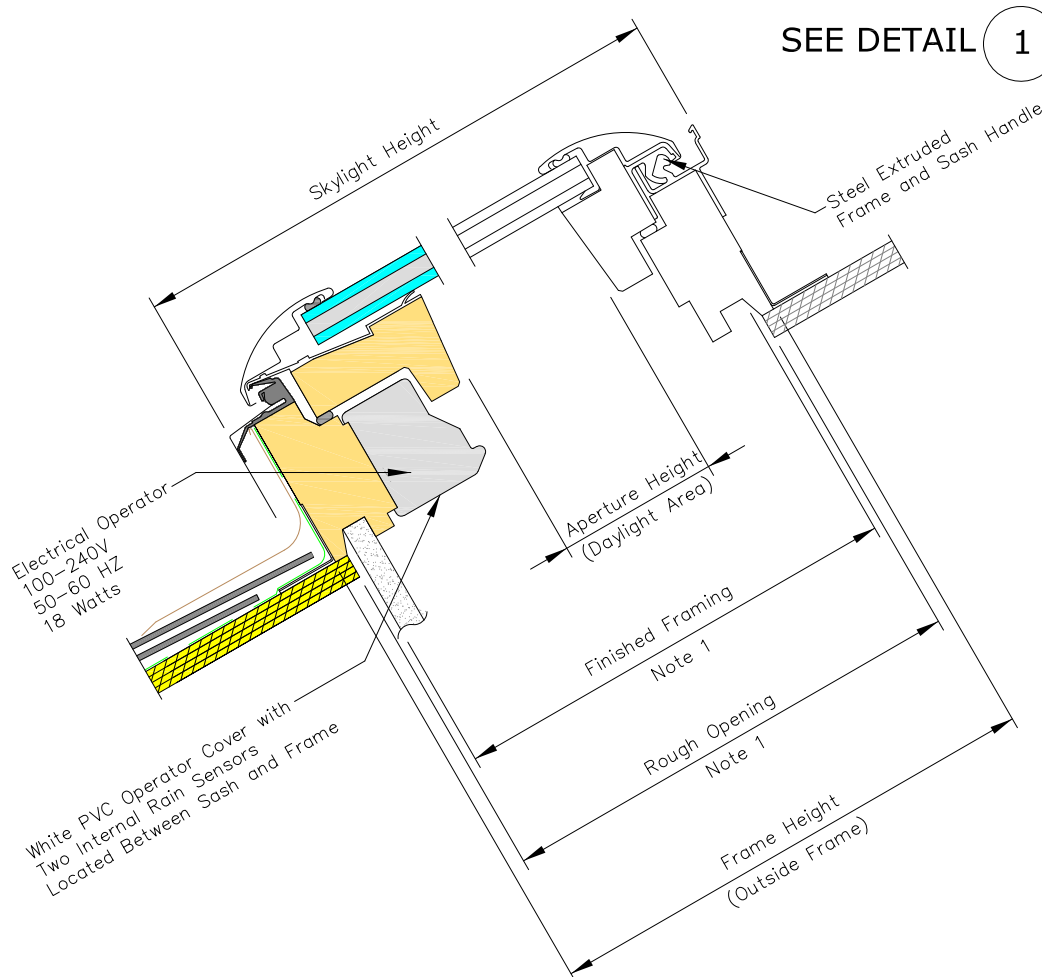
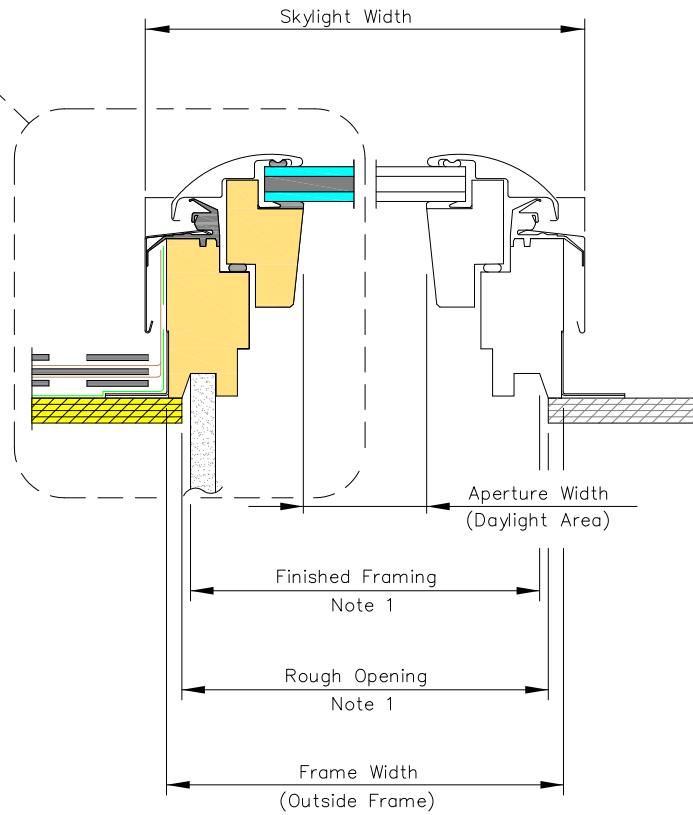




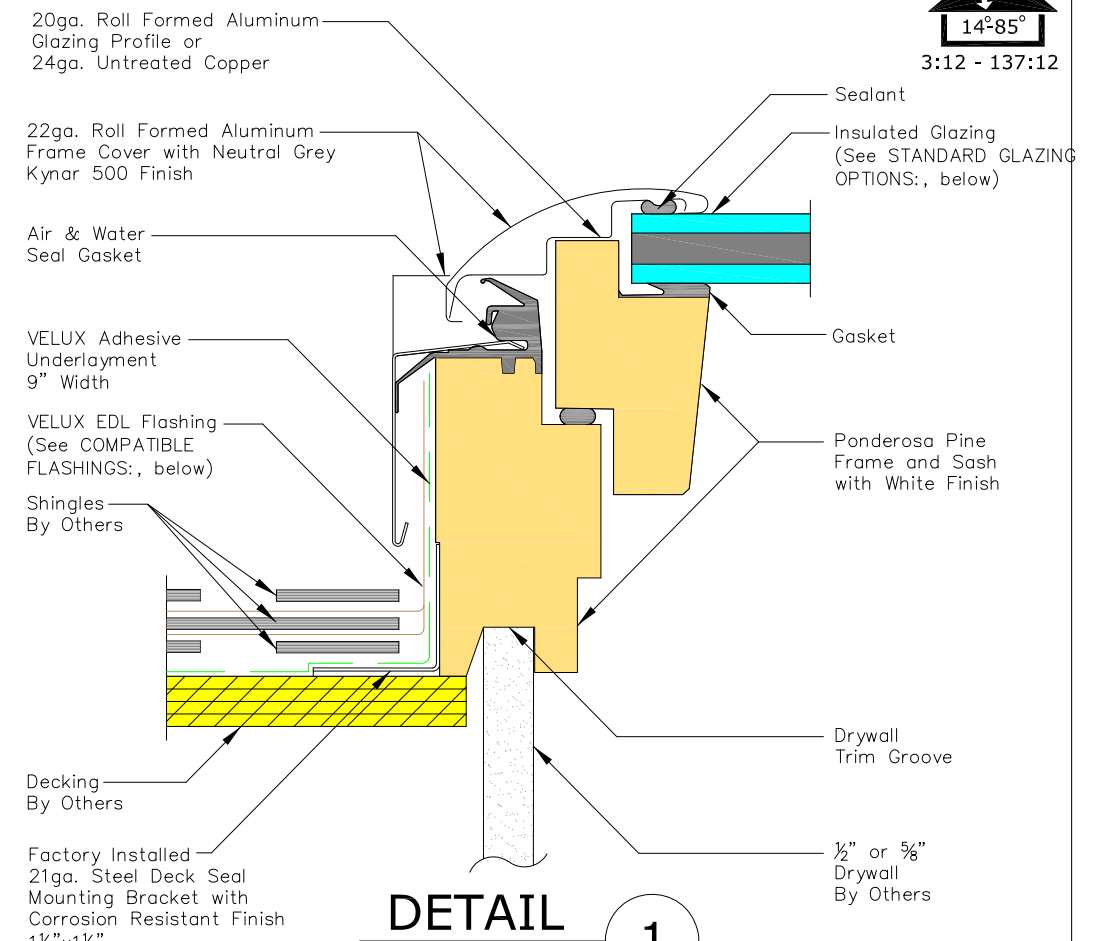
3:12 - 137:12



VERTICAL CROSS SECTION



HORIZONTAL CROSS SECTION



DETAIL 1

- STANDARD GLAZING OPTIONS:**
- Laminated LowE3 (04)
 - Impact (06)
 - Snowload (10)
- *Tempered Exterior Pane used with all options

- COMPATIBLE FLASHINGS:**
- EDL Step flashing
 - EKL/EKX Combi flashing
 - EDW Tile flashing
 - EKW/EKX Combi tile flashing
 - EDM Metal roof flashing
 - ECB Counter flashing for curbs

- ELECTRICAL/CONTROL DATA:**
- VSE Skylight controlled via 2.4 GHZ radio frequency KLR 200 remote control provided with skylight. Optional controls for VSE Skylight are KLI 110 Wall Mounted Keypad or KLF 100 Home Automation Integration Kit.
 - Electrical Operator 100-240V, 50-60 HZ, 18 WATTS

PRODUCT DIMENSIONS

METRIC UNITS (MILLIMETERS)										IMPERIAL UNITS (INCHES)									
Size	Rough Opening Width	Frame Width	Frame Aperture Width	Skylight Width	Rough Opening Height	Frame Height	Frame Aperture Height	Skylight Height	Daylight Area (Sq. Meters)	Size	Rough Opening Width	Frame Width	Frame Aperture Width	Skylight Width	Rough Opening Height	Frame Height	Frame Aperture Height	Skylight Height	Daylight Area (Sq. Feet)
C01	533	546	407	566.7	682	695	519	720	.21	C01	21	21 1/2	16	22 5/16	26 7/8	27 3/8	20 7/16	28 3/8	2.27
C04	533	546	407	566.7	962	975	799	1000	.33	C04	21	21 1/2	16	22 5/16	37 7/8	38 3/8	31 7/16	39 3/8	3.50
C06	533	546	407	566.7	1162	1175	999	1200	.41	C06	21	21 1/2	16	22 5/16	45 3/4	46 1/4	39 5/16	47 1/4	4.38
C08	533	546	407	566.7	1382	1395	1219	1420	.50	C08	21	21 1/2	16	22 5/16	54 7/16	54 15/16	48	55 15/16	5.34
M04	763	776	637	796.7	962	975	799	1000	.51	M04	30 1/16	30 9/16	25	31 3/8	37 7/8	38 3/8	31 7/16	39 3/8	5.48
M06	763	776	637	796.7	1162	1175	999	1200	.64	M06	30 1/16	30 9/16	25	31 3/8	45 3/4	46 1/4	39 5/16	47 1/4	6.86
M08	763	776	637	796.7	1382	1395	1219	1420	.78	M08	30 1/16	30 9/16	25	31 3/8	54 7/16	54 15/16	48	55 15/16	8.36
S01	1123	1136	997	1156.7	682	695	519	720	.52	S01	44 1/4	44 3/4	39 1/4	45 9/16	26 7/8	27 3/8	20 7/16	28 3/8	5.57
S06	1123	1136	997	1156.7	1162	1175	999	1200	1.0	S06	44 1/4	44 3/4	39 1/4	45 9/16	45 3/4	46 1/4	39 5/16	47 1/4	10.73

NOTES:

1. The ROUGH OPENING and FINISHED FRAMING dimensions are based on perpendicular interior finish material on all four sides and these dimensions will vary depending on the roof construction, the thickness and the design of the interior finish material.
2. Max sash opening is 11" by stainless steel chain.

Sky-Global Product Management

VELUX
1418 Evans Pond Road
Greenwood, SC 29649
1-800-88-VELUX
www.VELUXUSA.com

VSE - Electric Venting Skylight

This drawing is an instrument of service and is provided for informational use only.