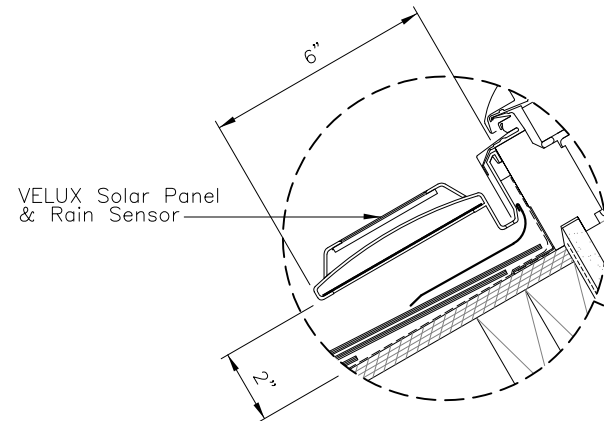
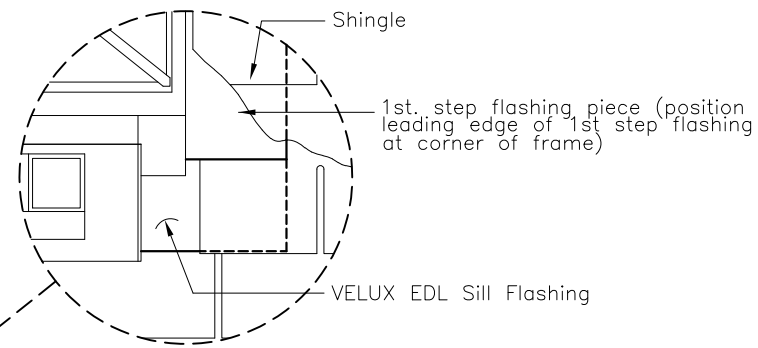


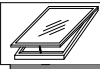
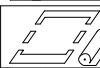
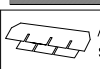

ELEVATION

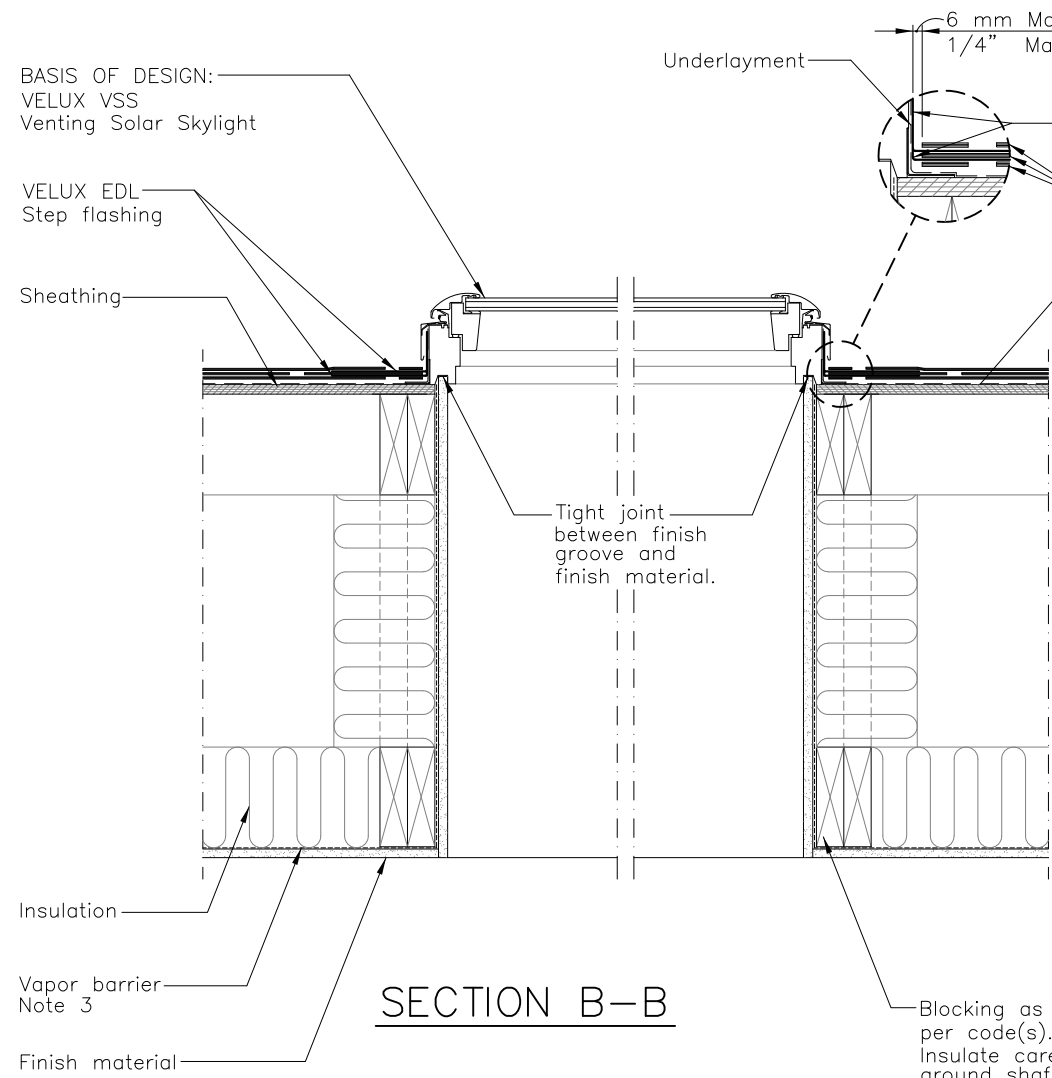


BASIS OF DESIGN:
VELUX VSS
Venting Solar Skylight

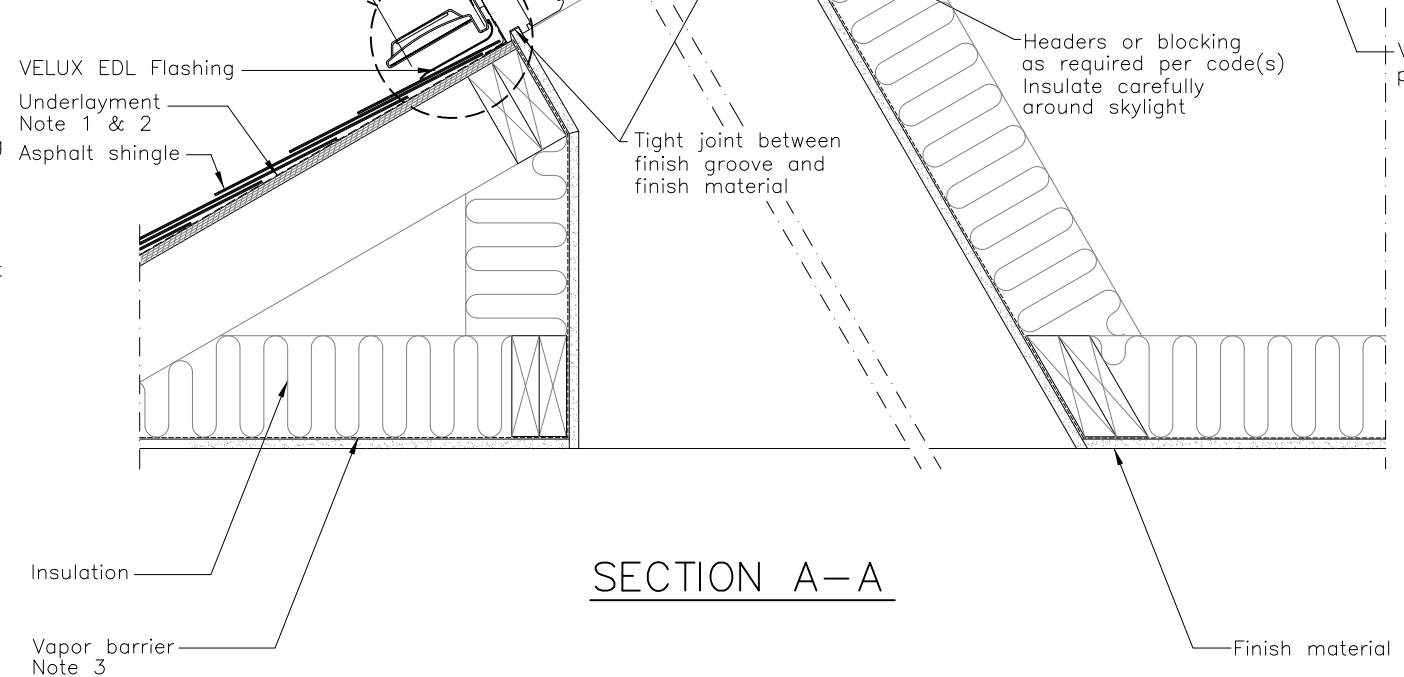
60-100 mm
2 3/8"-4"

9 1/4"

-  VSS
-  EDL
-  Asphalt shingles
-  Light shaft



SECTION B-B



SECTION A-A

GENERAL NOTES

1. Wrap frame in ZOZ 216 adhesive underlayment provided with VELUX flashing.
2. Underlayment to be folded up against all sides of skylight.
3. Vapor barrier should be used to avoid moisture.

VELUX <small>Sky-Product Management</small>	<small>VELUX 1418 Evans Pond Road Greenwood, SC 29649 1-800-88-VELUX www.VELUXUSA.com</small>	<small>Name</small>	<small>Date</small>
		<small>Drawn by</small> JDH	<small>July 2020</small>
VSS-Residential/Commercial Roof Section (Light Shaft and Asphalt Shingles)		<small>Checked by</small> WQ, JL	<small>July 2020</small>
		<small>Drawing No.</small>	
		VSS-02-0720	

This drawing is an instrument of service and is provided for informational use only.